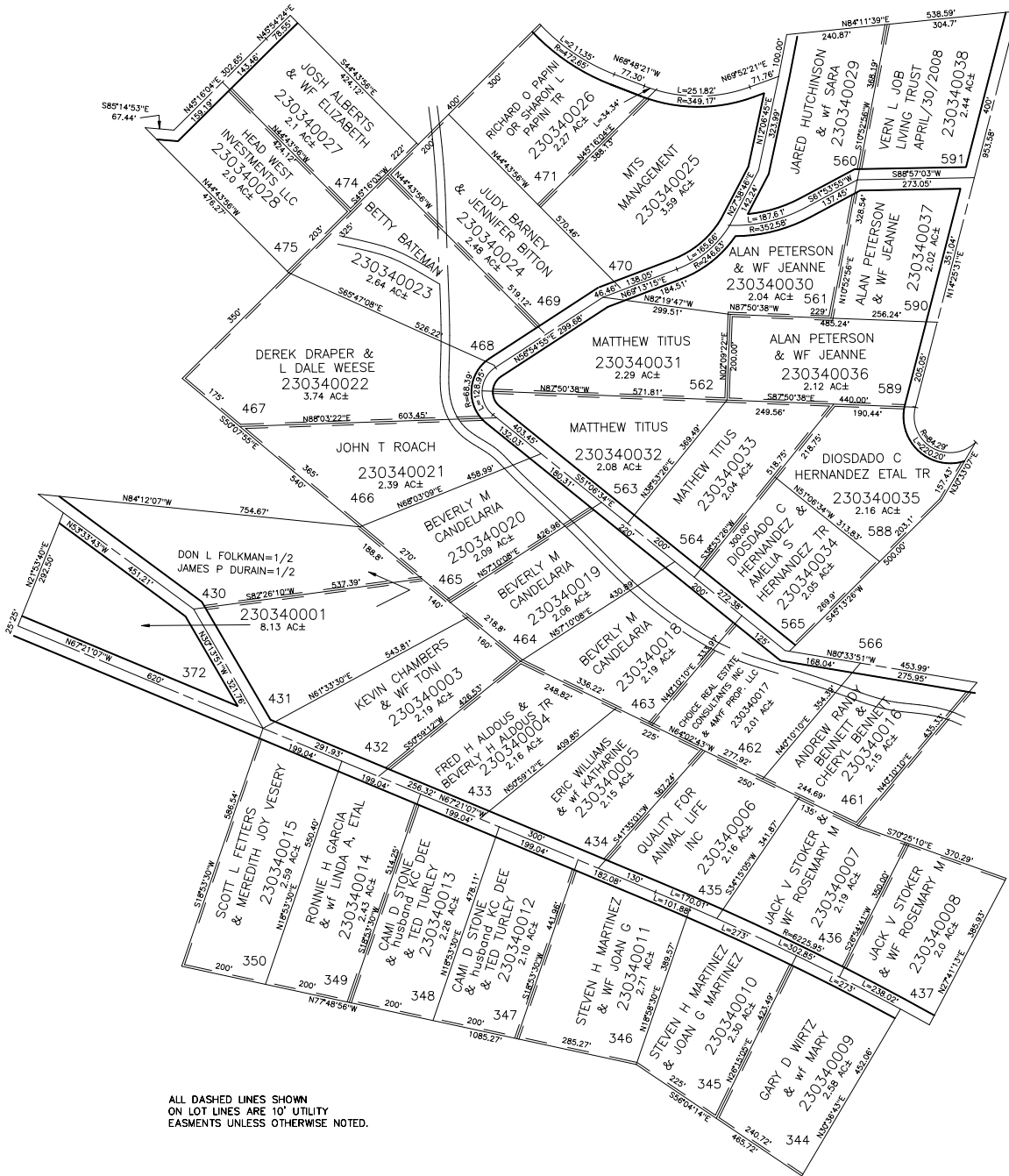


PART OF SEC. 29-32, T.7N., R.3E., S.L.B. & M.
EVERGREEN PARK SUBDIVISION NO. 1

IN WEBER COUNTY

SCALE 1" = 200'

TAXING UNIT: 58



SEE PAGE 37

FOR COMPLETE ENG DATA SEE ORIGINAL DEDICATION PLAT IN BOOK 13, PAGE 54 OF RECORDS.

ALL DASHED LINES SHOWN ON LOT LINES ARE 10' UTILITY EASMENTS UNLESS OTHERWISE NOTED.